

CYBERWORLDS

6-8 October
Santander
2014
International Conference

Social Events

Sunday 5th 2014

October 5th, Sunday (Day 0)	
17:30 – 18:30	Guided Visit of the Royal Palace (Royal Palace of La Magdalena)
18:30 – 20:00	Welcome Reception & Cocktail (Royal Palace of La Magdalena)

The Royal Palace of La Magdalena is closed on Sunday evenings. However, CW'2014 conference delegates will have the opportunity to visit the Palace on Sunday 5th. To this aim, we have recruited an English-speaking official tourist guide who will show us different rooms of the palace, which are preserved in much the same way they were when the royal family lived there.

The visit will last about 30-40 minutes. Pictures with your digital camera are allowed. Then, we will have the welcome reception, where a cocktail will be served.

If lucky enough to get a sunny day, you'll enjoy a beautiful view of the city bay and the natural environment. Don't forget your camera.

NOTE: The Royal Palace is a historical monument. Please, pay attention not to damage it in any way.

Further Information:

Please, visit the website:

<http://palaciomagdalena.com/en>

for further details about the palace, its history and natural environment.

There, you can click on:

- link [Palace](#) to get general information about the area,
 - link [History](#) for a description of its history and the construction process,
 - link [Gallery](#) for some nice pictures, and
 - link [Virtual Tour](#) for a virtual tour of some (both inside and outside) parts of the building.
- There is also a HTML5 version available for iPad/iPhone.

CYBERWORLDS

6-8 October
Santander
2014
International Conference



The Royal Palace of La Magdalena.



The Royal Palace of La Magdalena: (left) Royal Hall; (right) detail of a room.



The Royal Palace of La Magdalena: southern view.

GRAN HOTEL VICTORIA

CYBERWORLDS

6-8 October
Santander
2014
International Conference

The Gran Casino is a regal, 1920's building with large windows and spacious terraces offering superb views of the Sardinero beach. The Casino was King Alfonso XIII and Queen Victoria Eugenia's main place of entertainment during their summer holidays in the city between 1913 and 1930.



The Gala will also include some cultural and musical amenities that conference delegates should not miss at all. In addition to nice food and environment, you'll also enjoy a cultural show including:

- regional dances, and
- the "typical spanish" university tuna (see picture below).



University tuna in Santillana del Mar.

CYBERWORLDS

6-8 October
Santander
2014
International Conference

Tuesday 7th 2014

October 6th, Monday (Day 1)	
15:00 – 21:00	Conference Tour

A half-day conference tour will take you to the “alive museum” of the Middle Ages, **Santillana del Mar** (a medieval town with cobbled streets, declared “Site of Artistic and Historical Importance” and one of the best-known cultural and tourist centres in Cantabria) and the **Altamira Neocave**, an exact reproduction of the original Altamira cave (now closed the public for preservation).

Tour Schedule and Program:

15:00 Departure time of bus from Santander to Altamira Neocave and Museum.

On a top of a hill near Santillana del Mar is the *Altamira Cave*, which is declared a "World Heritage Site" by UNESCO. The original cave is closed to the public for preservation, but visitors can visit the "Neocave", an exact reproduction of the original space with all its cracks and textures and the permanent exhibition "The Times of Altamira", which introduces the visitors to the prehistory of the Peninsula and Rupestrian art.

16:45 Visit of the Altamira Neocave. The group is splitted up into three subgroups. While a group visits the neocave, the other two groups visit the permanent exhibition "The Times of Altamira". Visits of the neocave are scheduled at **16:45** (group 1), **17:00** (group 2) and **17:15** (group 3).

17:30 Bus departure to Santillana del Mar. Guided visit of the village. Then, you'll have some free time for leisure and pictures.

The medieval town of Santillana del Mar with its cobbled streets is a declared "Site of Artistic and Historical Importance" and for decades has been one of the best-known cultural and tourist centre in Cantabria. It boasts an extraordinary architectural heritage of towers, stately houses and palaces. From a religious point of view, the Collegiate church of Santa Juliana is outstanding. The church dates back to the 12th century and gives its name to the village.

Santillana del Mar is 30 km far from Santander and it is a medieval village developed around the "Santa Juliana" collegiate church, although most of the houses were built between the XIV century and the XVIII one. The whole Santillana can only be visited on foot.

20.30-21:00 Arrival in Santander.

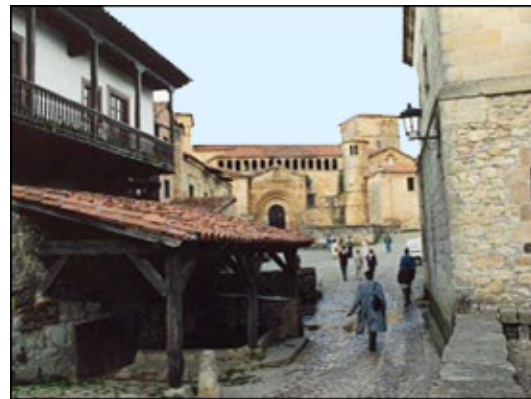
CYBERWORLDS

6-8 October
Santander
2014
International Conference

Santillana del Mar



Santillana del Mar: Collegiate church of Santa Juliana



Santillana del Mar: (left) Cloister of the Collegiate church of Santa Juliana; (right) view of Santa Juliana collegiate church, Velarde Palace, and Main Square.



Santillana del Mar: (left) Tower Don Borja; (right) Tower of Merino.

CYBERWORLDS

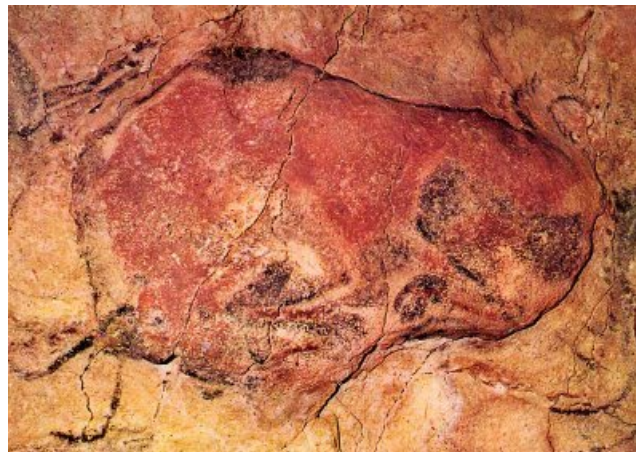
6-8 October
Santander
2014
International Conference



Santillana del Mar: (left) Don Borja Tower Coat of arms (Quevedo-Cossio); (right) Tagle House.

Altamira Cave

The Altamira Cave, discovered by Marcelino Sanz de Sautuola in 1879, is located in one of the hills that surround the nice valley where Santillana village is placed. Its discovery started big polemics between the archaeologists, because they did not believe that prehistoric men were able to do such perfect paintings. The main gallery, called the "polychromes chamber", is also known as the "Cappella Sistina" of the quaternary art. In its ceiling there are nearly a hundred of animals and signs, especially bison in different postures (21), with other animals as deers, horses, wild boars and bulls, sometimes superimposed, made with different techniques ñ engraving, print, scraping- that produce an splendid composition, full of movement and beauty, which is unique in the Palaeolithic art. Some paintings are as old as 25,000 years ago. The rest of the cave (270 metres -890 feet- long) has plenty of engravings, some of them older than the paintings, and an important archaeological deposit in the hall. Near the original caves (now closed to the public for preservation) there is an Investigation Centre and a Museum.



Altamira cave: polychrome bison.



Altamira Neocave: a high-technology realistic replica of the real cave.